

VON ROHR

EQUIPMENT CORP.

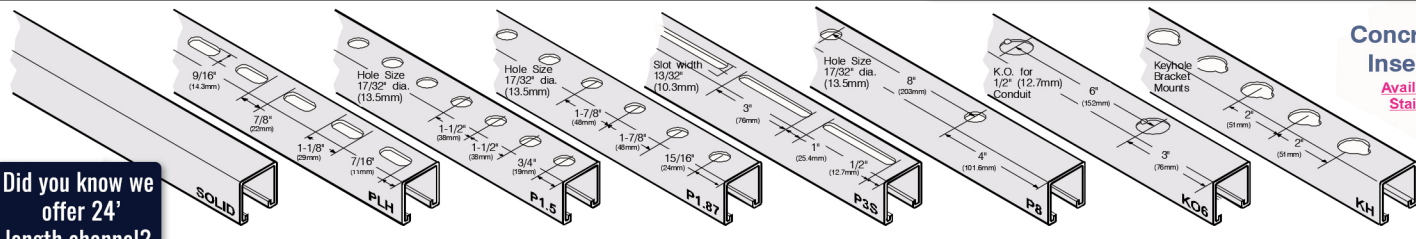


PHONE: 973-748-9111

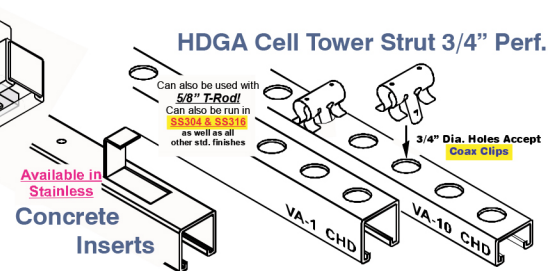
We specialize in providing what you need, when you need it. We offer both standard and custom products, on time, everytime.

Stainless • Plated • PVC • Hot Dip • Aluminum

Did you know we offer 24' length channel?



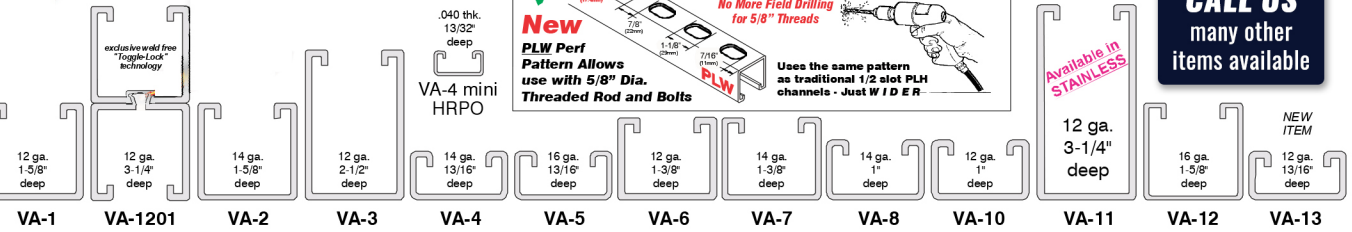
Concrete Insert Nuts
Available in Stainless



1-5/8" Wide Standard Channels

VERSABAR PLW Channel Perforation
NEW PRODUCT OFFERING AVAILABLE NOW
No More Field Drilling for 5/8" Threads
Uses the same pattern as traditional 1/2 slot PLH channels - Just WIDER

If you don't see it CALL US many other items available

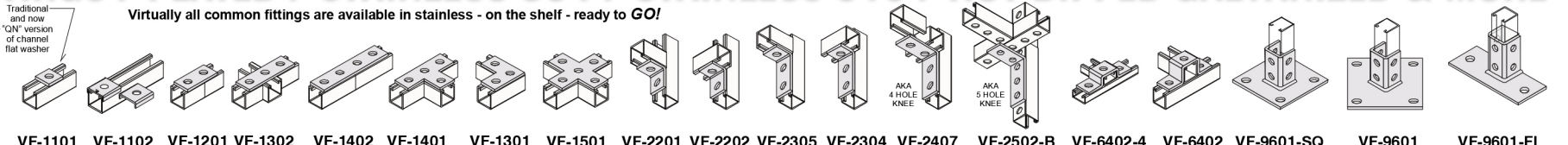


Pipe and Tubing Clamps & Isolators

NEW ITEM
KLO-SHURE INSULATION COUPLINGS

RAMING FITTINGS / PLATED / STAINLESS 304 / STAINLESS 316 / HOT DIPPED GALVANIZED & MORE

New "QN" Qwik Nut Series
Same size as traditional channel washer but equipped with a "scissor hinge" to lock into place at any point on a threaded rod.



Raceway Products

Beam Clamps

NEW VXH-1 WIDE JAW "Handi-Clamp"
With 5 Base Threads:
1/4"-20
5/16"-18
3/8"-16
1/2"-13
5/8"-11

NEW VX-9000-WM WIDE JAW
1/4"-20
3/8"-16
1/2"-13
Available 3"

Brackets

Channel Nuts

PORCE-A-CLAMP
The THERMOPLASTIC Cable Isolator Clamps

Fasteners & Anchors
Screws / Nuts / Washers
Threaded Rod
Wedge Anchors
Drop In Anchors
Adhesive Anchors
and many more!

VRP Series Roofing Piers

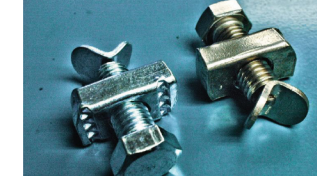
Exclusive Screw Down Design
Manufactured With:
HOT DIPPED STRUT
& STAINLESS FASTENERS

2 New Main Street
East Orange, NJ 07019
Phone: 973-748-9111
orders@vonrohr.com
www.vonrohr.com



FREE Jobsite Delivery around the Tri-State

NEW VN-1-RS
NEW VN-1-RS-SS-316
Threaded Rod Stabilizers
For Seismic Bracing



Just place rod inside of channel, insert clamping nut, and tighten. Zinc Plated & Stainless Steel 316